

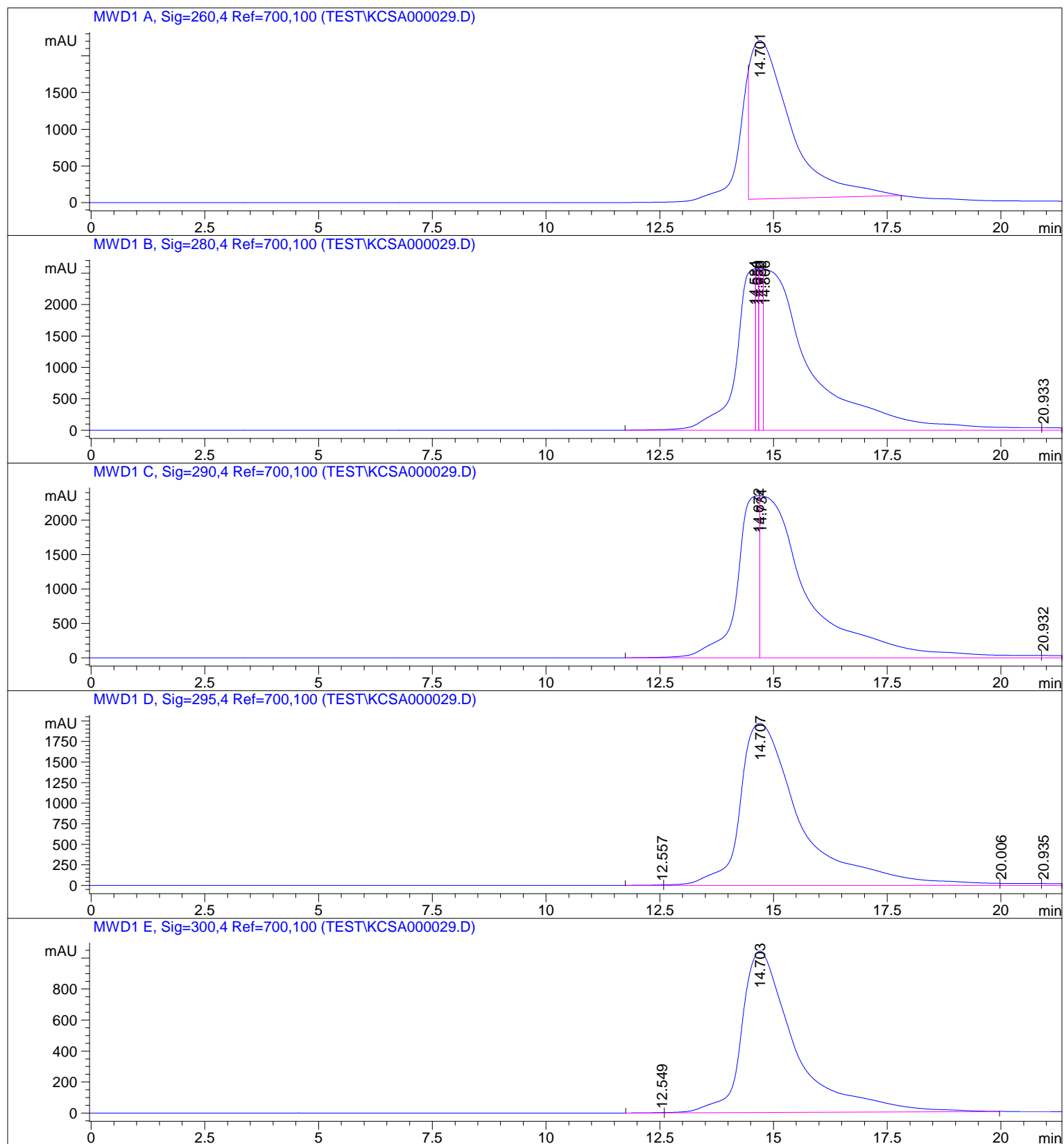
=====

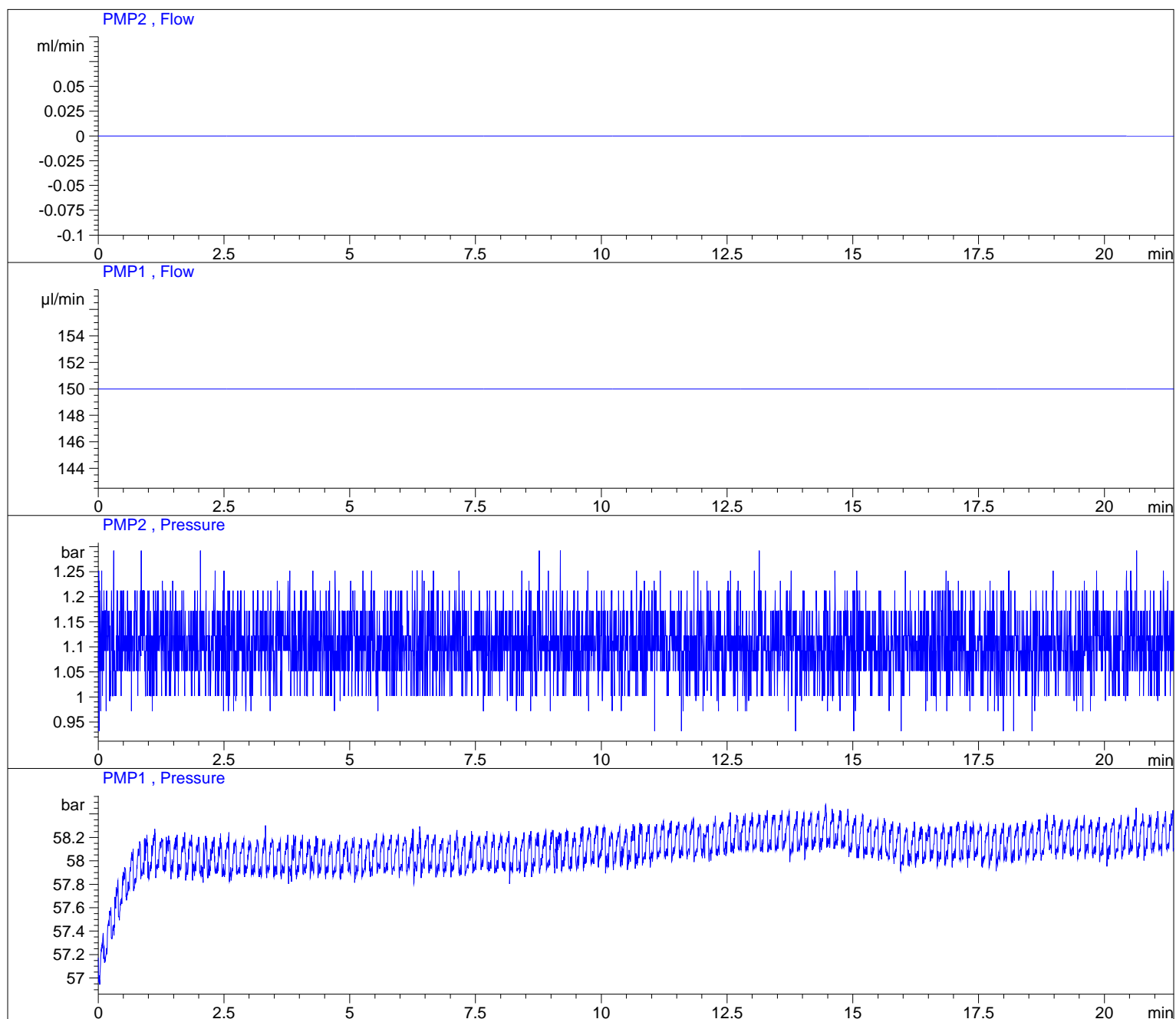
Acq. Operator : pm agilent
Acq. Instrument : Instrument 1 Location : Pl-B-01
Injection Date : 7/10/2011 11:40:03 AM Inj Volume : 30.0 µl

Acq. Method : D:\AGILENT\METHODS\USERS\HPLC_RUNNING.M
Last changed : 7/10/2011 11:36:55 AM by pm agilent
(modified after loading)

Analysis Method : D:\AGILENT\METHODS\USERS\HPLC_RUNNING.M
Last changed : 7/10/2011 12:01:16 PM by pm agilent
(modified after loading)

Method Info : Auto-sampler mode at 40 µl/min



=====
Area Percent Report
=====

Sorted By : Signal
Multiplier: : 1.0000
Dilution: : 1.0000
Use Multiplier & Dilution Factor with ISTDs

Signal 1: MWD1 A, Sig=260,4 Ref=700,100

Peak #	RetTime [min]	Type	Width [min]	Area [mAU*s]	Height [mAU]	Area %
1	14.701	BB	0.8883	1.33812e5	2161.20508	100.0000

Totals : 1.33812e5 2161.20508

Signal 2: MWD1 B, Sig=280,4 Ref=700,100

Peak #	RetTime [min]	Type	Width [min]	Area [mAU*s]	Height [mAU]	Area %
1	14.584	VV	0.3481	7.39643e4	2569.16504	25.3894
2	14.650	VV	0.0542	1.06521e4	2579.56201	3.6565
3	14.720	VV	0.0790	1.61499e4	2580.53418	5.5437
4	14.806	VV	0.8665	1.89496e5	2569.04272	65.0475
5	20.933	VBA	0.3113	1057.24390	41.49179	0.3629

Totals : 2.91320e5 1.03398e4

Signal 3: MWD1 C, Sig=290,4 Ref=700,100

Peak #	RetTime [min]	Type	Width [min]	Area [mAU*s]	Height [mAU]	Area %
1	14.672	VV	0.4012	7.86070e4	2356.05420	30.8107
2	14.731	VV	0.8801	1.75631e5	2354.98901	68.8399
3	20.932	VBA	0.3111	891.38800	35.00341	0.3494

Totals : 2.55129e5 4746.04663

Signal 4: MWD1 D, Sig=295,4 Ref=700,100

Peak #	RetTime [min]	Type	Width [min]	Area [mAU*s]	Height [mAU]	Area %
1	12.557	VV	0.2881	160.98344	6.90151	0.0870
2	14.707	VV	1.1194	1.82948e5	1970.05603	98.8793
3	20.006	VV	0.6131	1318.07678	25.58113	0.7124
4	20.935	VBA	0.3122	594.37964	23.25534	0.3212

Totals : 1.85021e5 2025.79402

Signal 5: MWD1 E, Sig=300,4 Ref=700,100

Peak #	RetTime [min]	Type	Width [min]	Area [mAU*s]	Height [mAU]	Area %
1	12.549	VV	0.2213	42.10503	2.39322	0.0495
2	14.703	VV	1.1673	8.49479e4	1041.82715	99.9505

Totals : 8.49900e4 1044.22036

*** End of Report ***