

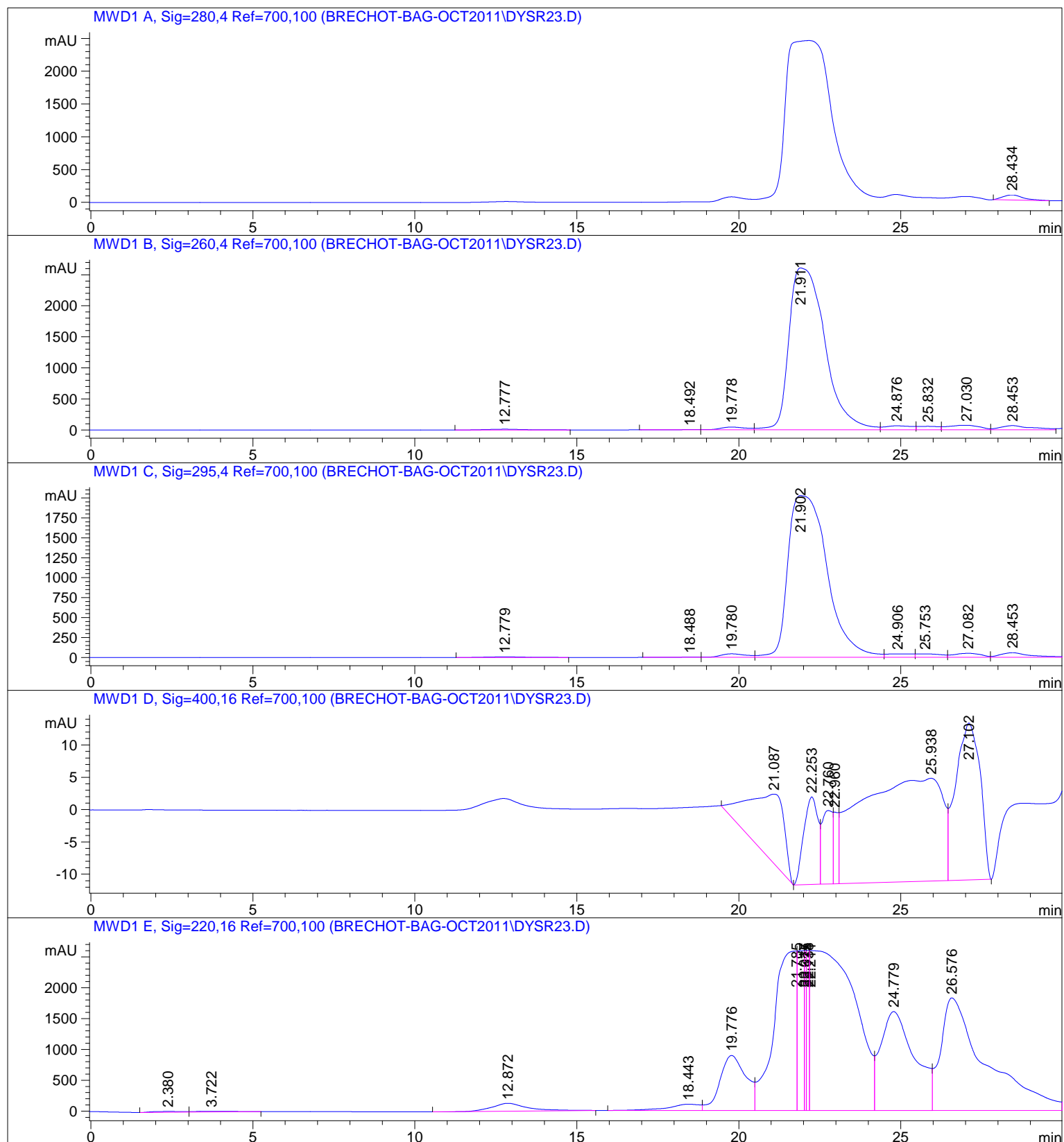
=====

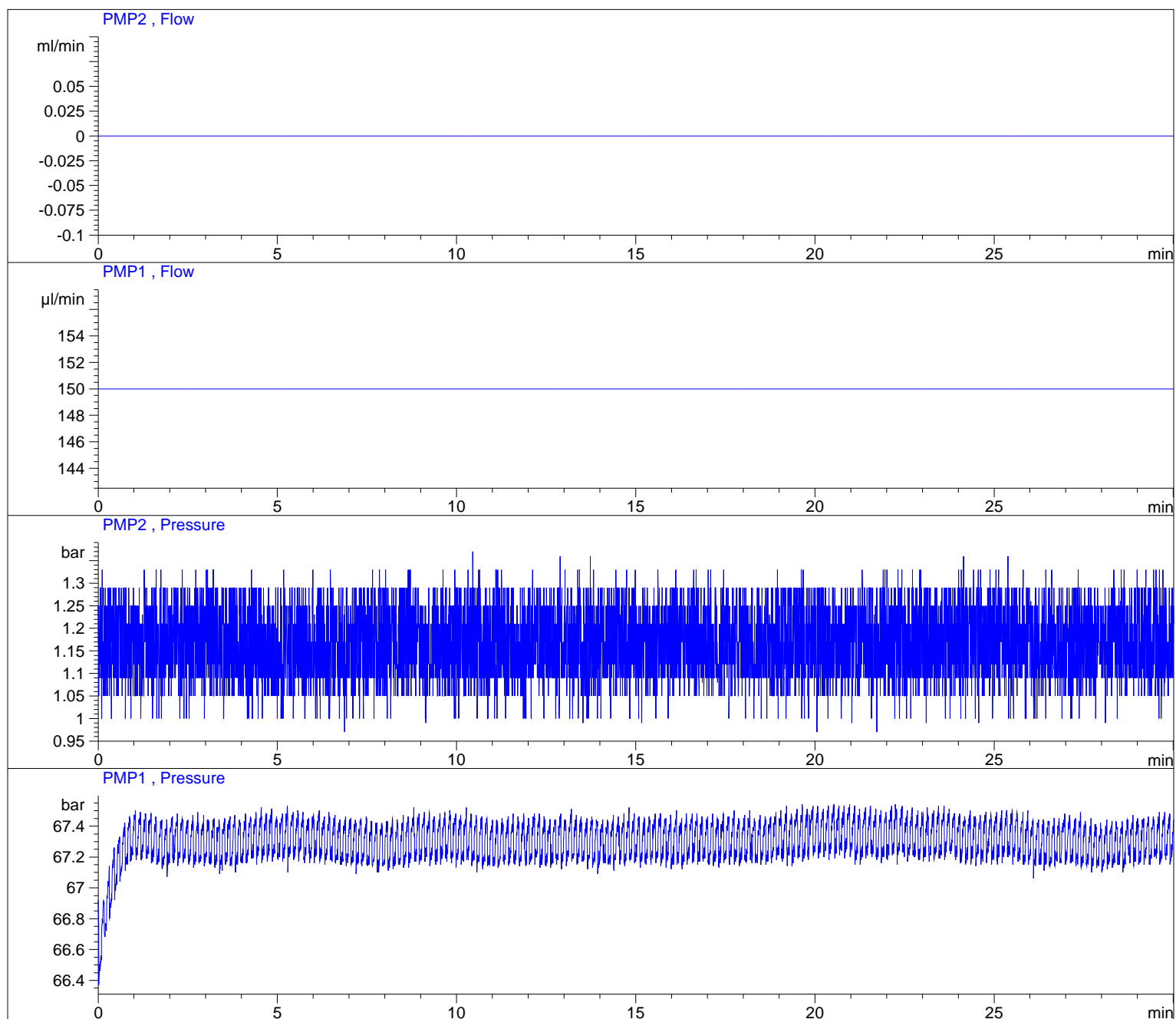
Acq. Operator : DysR23
Acq. Instrument : Instrument 1 Location : P1-E-01
Injection Date : 10/7/2011 3:48:31 PM Inj Volume : 20.0 µl

Acq. Method : D:\AGILENT\METHODS\USERS\HPLC_BASIC.M
Last changed : 10/7/2011 3:44:14 PM by DysR23
(modified after loading)

Analysis Method : D:\AGILENT\METHODS\USERS\HPLC_BASIC.M
Last changed : 10/7/2011 4:18:28 PM by DysR23
(modified after loading)

Method Info : Auto-sampler mode at 40 µl/min



=====
Area Percent Report
=====

Sorted By : Signal
Multiplier: : 1.0000
Dilution: : 1.0000
Use Multiplier & Dilution Factor with ISTDs

Signal 1: MWD1 A, Sig=280,4 Ref=700,100

Peak #	RetTime [min]	Type	Width [min]	Area [mAU*s]	Height [mAU]	Area %
1	28.434	BB	0.6711	3315.01880	77.48431	100.0000

Totals : 3315.01880 77.48431

Signal 2: MWD1 B, Sig=260,4 Ref=700,100

Peak #	RetTime [min]	Type	Width [min]	Area [mAU*s]	Height [mAU]	Area %
1	12.777	BB	1.0016	930.52820	11.93552	0.4221
2	18.492	BV	0.6600	224.66420	4.04496	0.1019
3	19.778	VV	0.8325	2538.58447	45.39061	1.1517
4	21.911	VV	1.0205	2.00471e5	2608.88721	90.9468
5	24.876	VV	0.8278	3810.41187	65.58932	1.7286
6	25.832	VV	0.6439	2577.67407	57.18633	1.1694
7	27.030	VV	0.8764	5123.63428	74.87287	2.3244
8	28.453	VV	0.9779	4750.23828	68.93907	2.1550

Totals : 2.20427e5 2936.84590

Signal 3: MWD1 C, Sig=295,4 Ref=700,100

Peak #	RetTime [min]	Type	Width [min]	Area [mAU*s]	Height [mAU]	Area %
1	12.779	BB	0.9781	632.71393	8.18271	0.3416
2	18.488	BV	0.6570	183.65096	3.34274	0.0992
3	19.780	VV	0.8263	2478.68799	44.88160	1.3384
4	21.902	VV	1.1143	1.70292e5	2030.73474	91.9498
5	24.906	VV	0.6722	2482.37817	44.40313	1.3404
6	25.753	VV	0.7776	2364.17236	43.80926	1.2765
7	27.082	VV	0.7445	2984.44507	52.08073	1.6115
8	28.453	VBA	0.9557	3782.93872	58.55591	2.0426

Totals : 1.85201e5 2285.99083

Signal 4: MWD1 D, Sig=400,16 Ref=700,100

Peak #	RetTime [min]	Type	Width [min]	Area [mAU*s]	Height [mAU]	Area %
1	21.087	BV	0.8874	768.18799	10.75385	13.6058
2	22.253	VV	0.4971	412.89673	13.56391	7.3131
3	22.760	VV	0.3180	257.39288	11.37461	4.5588
4	22.960	VB	0.1389	118.86313	11.10387	2.1053
5	25.938	BV	2.1969	2816.74731	15.89915	49.8891
6	27.102	VV	0.6849	1271.92957	24.29264	22.5279

Totals : 5646.01761 86.98803

Signal 5: MWD1 E, Sig=220,16 Ref=700,100

Peak #	RetTime [min]	Type	Width [min]	Area [mAU*s]	Height [mAU]	Area %
1	2.380	BV	0.8607	917.55963	13.36973	0.1155
2	3.722	VV	1.1162	837.45325	8.84853	0.1054
3	12.872	BB	1.0474	9584.54883	127.44818	1.2068
4	18.443	BV	0.9449	6733.19580	100.59531	0.8478
5	19.776	VV	0.8437	5.00056e4	889.73639	6.2965
6	21.785	VV	0.5652	1.23890e5	2584.88892	15.5997
7	22.017	VV	0.1645	3.55176e4	2590.91919	4.4722
8	22.075	VV	0.0505	9886.85645	2591.72363	1.2449

Peak #	RetTime [min]	Type	Width [min]	Area [mAU*s]	Height [mAU]	Area %
9	22.138	VV	0.0714	1.45426e4	2592.49878	1.8311
10	22.211	VV	1.1257	2.47913e5	2592.31396	31.2162
11	24.779	VV	1.0358	1.16702e5	1602.25024	14.6947
12	26.576	VBA	1.3643	1.77650e5	1824.00159	22.3690

Totals : 7.94181e5 1.75186e4

=====
*** End of Report ***